



# Western Cape Forum for Intellectual Disability

WESKAAP FORUM VIR INTELLEKTUELE GESTREMHEID - IQUMRHU LE NTSHONA KOLONI LOKHUBAZEKO NGENGOQONDO

ADDING SKILLS • ADDING KNOWLEDGE • ADVANCING RIGHTS

1147

MANUALS &  
RESOURCES

90  
WORKSHOPS

2394  
ATTENDEES

## VISION

A South Africa where all people  
with intellectual disability are enabled  
to live with inherent dignity  
as confirmed in the Constitution



SUPPORTING SERVICE PROVIDERS IN THE INTELLECTUAL DISABILITY SECTOR

## ANNUAL REPORT

2019/20

[www.wcfid.co.za](http://www.wcfid.co.za)

## FROM THE DIRECTOR'S DESK



The 2019/20 year was vibrant, with an active training programme, forming new strategic partnerships with organisations, and reaching out across South Africa in response to the advocacy challenges of our sector.

I am once again reminded of the strength of the collective. I would like to thank our dedicated staff team, while at the same time acknowledging that it is the collaborative response that makes up the Forum: community staff (drivers, caregivers, principals, teachers, workshop managers and therapists to name but a few), parents, home caregivers, supporters and many government officials. Together we are able to work towards creating an environment that facilitates the development and dignity of the person with intellectual disability.

We continue to strive to hold in balance the relationship with government as both supporter and 'opposition' – the many dedicated government officials committed to, and supporting the provision of excellent services; yet, as a country, we continue to fail people with disabilities, including those with intellectual disability. To quote the WCFID's Advocacy Manager, in her Mail and Guardian article (see Advocacy report): "We leave them behind. We are failing our children. We need to do better."

As we go into a new year, let us celebrate what has been accomplished, yet continuously endeavour to support the empowerment of people with intellectual disability to know their rights, reach their full potential, and live with dignity.

**Tessa Wood**  
Director



"Dear WCFID team

Thank you for this very useful & informative newsletter. I will definitely be sharing it widely with all the parents, colleagues & clients I have contact with. I am reminded of the professor of intellectual disability's message that we have much to learn from people with ID...and this seems an example in a way. We learn how to message simply and accessibly things that are complex and difficult for many.

Sending positive and encouraging energy to you all. You are doing such valuable work!  
Love & best wishes." Parent

## REVIEWING THE WCFID THEORY OF CHANGE



### THEORY OF CHANGE

This theory of change shows how WCFID's core programmes of capacity building and training, advocacy, inclusive of self advocacy, and research and resource development enable our desired outcomes. These outcomes are that all stakeholders working with pwID, government representatives responsible for pwID, community and family members, and pwID themselves become more aware of the rights and issues of pwID, are more accepting and committed, and work (together where possible) to achieve these rights.

If all stakeholders are able to achieve these outcomes, within an evidence informed lifespan approach, we believe that we will see pwID who have access to quality services, who are living as independently as possible, and who are more accepted, included by and participate in communities and in the media.

#### VISION

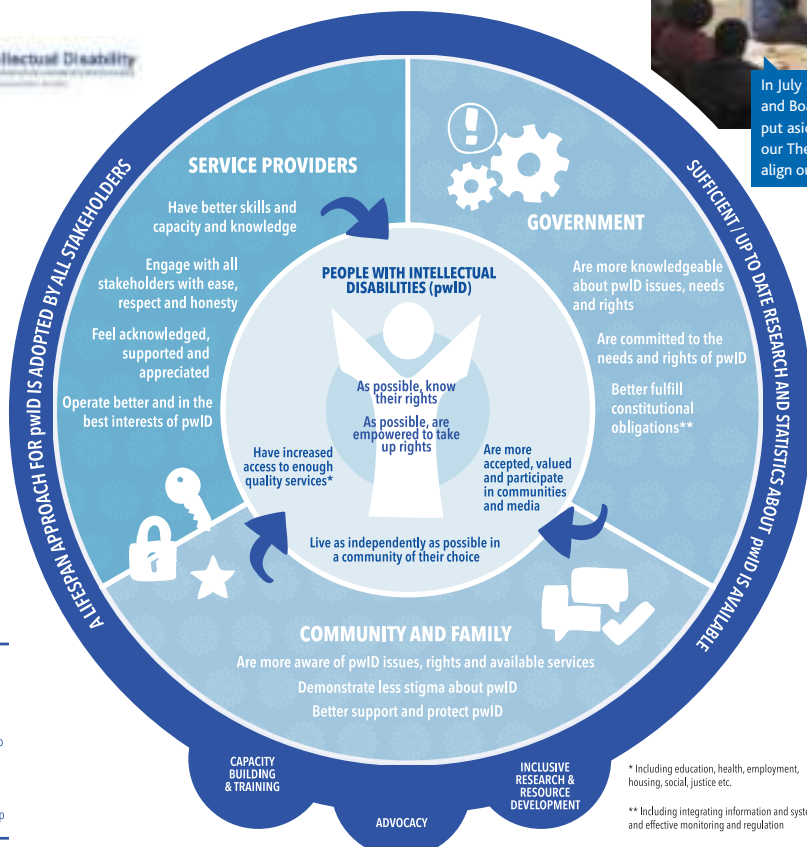
A South Africa where all people with intellectual disability are enabled to live with the inherent dignity as confirmed in the Constitution.

#### MISSION

Provide support to service providers in the intellectual disability sector, to ensure better quality of life for people with intellectual disability in the Western Cape.

#### VALUES

Integrity • Empowerment • Excellence • Community • Good stewardship



In July 2019 the Forum staff and Board of Management put aside three days to review our Theory of Change and align our core programmes.

\* Including education, health, employment, housing, social, justice etc.

\*\* Including integrating information and systems, and effective monitoring and regulation

## THE CHAIRPERSON'S REPORT



In trying to balance the impacts of a changing global economy, and a challenging South African socio economic and political context, social justice will always be difficult to achieve. Notwithstanding the occasional setbacks, we have witnessed and observed improvements in the quality of service and standards of outputs. This is indicative of the constant awareness of the need of our communities, and a developmental approach towards the sector.

Overarching the WCFID's work is the South African Constitution and various legislative frameworks, international treaties, and the United Nations sustainable goals that guide our thinking and assist us in our planning to ensure that the rights of people with disabilities are supported, advocated for, and achieved.

The WCFID's reputation for serving and supporting communities, member organisations, and people with disabilities acknowledges the collaborative partnerships and funders that give us the opportunity to reach our goals and objectives, and plan ahead.

The WCFID's advocacy role has created opportunities and platforms to bring about systemic changes in the way issues are addressed, resources are mobilised, and planning and monitoring are undertaken to bring about social and economic justice for people with disabilities.

At the core of the WCFID's work has been our direct programmes: training and capacity building; research and resource development; an advisory service; community awareness and advocacy; all of which have contributed significantly to the advancement and intersection of knowledge and capacity, theory and practice. The feedback received - comments and suggestions from our trainees, members and organisations - was used as a gauge to inform our planning. Good governance has been maintained through healthy debate and dialogue, along with intermittent reviews of policies, procedures, and guiding theories.

Notably, the Western Cape Forum for Intellectual Disability has once again excelled beyond expectation. These successes are largely due to good staff leadership, and capable, skilled, and efficient staff, whose hard work has resulted in the desired outcomes.

Just as we thought it was time to consolidate for the year, the COVID-19 pandemic descended upon us, and created a global and public health emergency and human rights crisis. The WCFID re-organised themselves to implement alternate support systems and platforms, and continued to show commitment and resilience in the face of adversity. Now more than ever we must remain vigilant and pro-active as marginalised communities and vulnerable groups are most at risk as the pandemic widens the justice gap and the realities of gross disparities are exposed.

**Fatima Shaboodien**  
Chairperson

## DONOR RECOGNITION

FINANCIAL AID  
AND IN KIND/SERVICES

Anne Kreitzer Will Trust  
Consol Glass  
Co-workers of Mother Teresa  
Dept. Health, Western Cape  
Dept. Social Development, Western Cape  
Dorrington Matthee Consulting cc  
ELMA Philanthropies  
Frank Marcus  
Frank Robb Charitable Trust  
Health and Welfare SETA  
InVision Services, USA  
JET Lee Will Trust  
Legal Resources Centre, Cape Town  
National Lotteries Commission  
RAITH Foundation  
Syringa Trust  
± 4,000 Volunteers at One-to-One Day,  
including the service providers (schools,  
community clubs, religious bodies)



Audited financial statements for  
2019/20 are available on request

### THE GROVER SCHOLARSHIP AND

#### SPONSORSHIP TRUST:

The Grover Trust Fund Allocations Committee awarded sponsorships to the facilities of 14 people with intellectual disability, and 6 scholarships, which includes 1 PhD and 3 Master's degrees, all specific to intellectual disability.



## WCFID STAFF

Tessa Wood, Director; Aimee Isaacs, Programme Manager; Felicity Dreyer, Administrator; Sandy Butler, Project & HR Administrator; Busiswa Mbabala and Desiree Douglas (resigned), Training Coordinator; Vanessa Japtha, Advocacy Manager; Dr. Mpoe Keikelame, Advocacy Researcher (on contract); Michelle Mert, Bookkeeper; Ruth Nugent and Maurisa Moloto (resigned), Community Trainer; Nosiho Peter, General Assistant; Nontuthuzelo Msweswe, Intern. Rebecca Johns (Consultant- Life Skills Trainer & Resource Developer)

## WITH THANKS

THE FORUM WISHES TO THANK THE FOLLOWING MEMBERS OF THE BOARD OF MANAGEMENT (2018-20) FOR THEIR SERVICE:

**Fatima Shaboodien** Principal, De Heide Children's Special Care Centre, Lansdowne (Chairperson)  
**Wendy Arendse** Consultant in community and organisational development (Treasurer)  
**Emeritus Prof. Colleen Adnams** Professor of Intellectual Disability, Dept. Psychiatry and Mental Health, UCT  
**Kay Cikizwa** Social Worker, Alexandra Hospital, Maitland  
**Lesinda Cunningham** Director, Elim Home, Overberg  
**Gail Davids** Services Manager, Oasis Association, Claremont  
**Rosemary De Waal** Retired Social Worker  
**Prof. Sharon Kleintjes** Vera Grover Professor of Intellectual Disability, Dept. Psychiatry and Mental Health, UCT; and WCG Dept. Health  
**Lindelwa Madikane** Principal, Vukani Special Care Centre, Khayelitsha  
**Aletta Pearce** Retired Deputy Chief Education Specialist for Special Schools (resigned May 2019)  
**Sue van der Linde** Director, Iris House, Stikland  
**Nomasango Xabanisa** Principal, Sibongile Day & Night Care, Khayelitsha  
**Tessa Wood** Director WCFID (ex officio)



# UPSKILLING OF SERVICE PROVIDERS, FAMILIES AND COMMUNITY

**90**  
Workshops

**2394**  
Attendees

**20**  
On-site  
workshops

**1095**  
Different people  
reached

## TRAINING PROGRAMME:

With the explicit objective of upskilling the intellectual disability sector through capacity building of organisations, staff and families, the training programme was designed and rolled out at the Forum offices and within the community (urban, peri-urban & rural).

## ORGANISATION MONITORING AND EVALUATION FEEDBACK:

“

I am so very grateful to WCFID for arranging the on-site training. From the very first time I phoned the WCFID, we have had such help from the Forum. Three of our staff were privileged to attend a workshop on "....." – the workshop itself was super, but the kindness of the WCFID staff who went out of their way to make our teachers welcome was way beyond what one would expect. It is often recommended that we "walk the extra mile" but for sure, you at the WCFID do that. The country is so fortunate to have such a group to guide and lead us in the service of those with disabilities."

*NGO co-ordinator*



“

Over the years the Forum has provided training to groups of staff from various facilities to enhance knowledge developments in respect of disability issues, legislation, medical, research and many other topics. These have impacted on our implementation activities in the workplace improved of life."

“

Recently I had a case of a child who has been sexually abused, now I have a better understanding of the type of service to render."

*Special school*

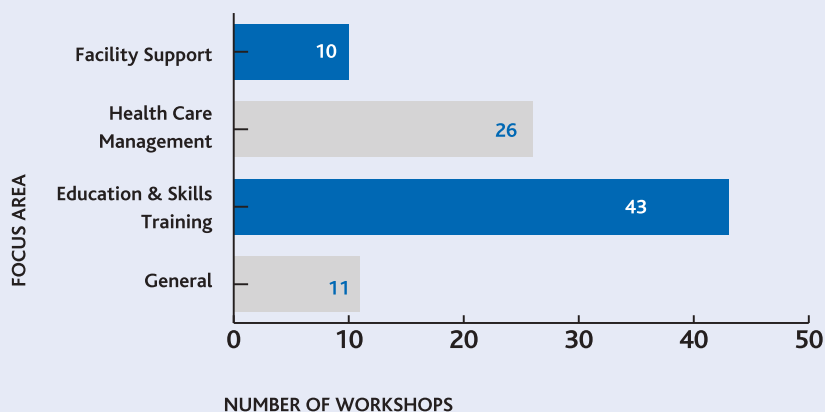


“

We could ensure that our parents / caregivers also have an understanding of ID and the dependent that deal with on a daily basis. Ndifunde kakhulu nendlela enisixelele ngayo ibemnandi kakhulu enkosi Siyabulela (we are thankful for what you taught us, I learnt a lot and you explained everything very well)."

*Special care centre*

### WORKSHOPS PER FOCUS AREA



### WCFID PRESENTS THEIR SEXUALITY AND INTELLECTUAL DISABILITY PROGRAMME ON THE INTERNATIONAL STAGE:

The WCFID presented on 'Sexuality and Intellectual Disability' at the 3rd International Developmental Paediatrics Association Congress in Manila, Philippines, in December 2019.

Represented by Rebecca Johns, 'Facilitating Sexuality Education for People with Intellectual Disability: Curriculum, Adaptations, and Resources' was presented.

This acknowledges Rebecca's significant role in training staff of WCFID member organisations, and the development of sexuality resource materials.



"Amazing connections and common issues" - Rebecca

### STRATEGIC CAPACITY BUILDING PARTNERSHIPS:

- **Robin Trust FET Nursing College:** Accredited 6 month educator course for special care centre staff - 19 caregivers graduated with a nationally accredited carer course for the intellectual disability sector (level 2)
- **False Bay TVET College:** Accredited centre management for principals course (N4 – National Diploma, Educare N6) - 9 principals of special care centres registered (attending& waiting list)
- **Disability Studies, University of Cape Town:** provided input in the development and roll out of a MOOC course (Massive Open Online Courses), 'Severe to Profound Intellectual Disability: Circles of Care & Education'.



## GOVERNANCE, COMPLIANCE AND FINANCIAL MANAGEMENT OF SPECIAL CARE CENTRES:

In response to ongoing needs for skills development in the area of 'Governance, Compliance and Financial Management' of special care centres, Dept. of Social Development contracted the WCFID to provide support and training. In response on-site (at the centres) assessments and training; workshops (rural and urban), and a help desk was provided.



“

WCFID have made a huge difference in our centre especially on our administration and also in record keeping”

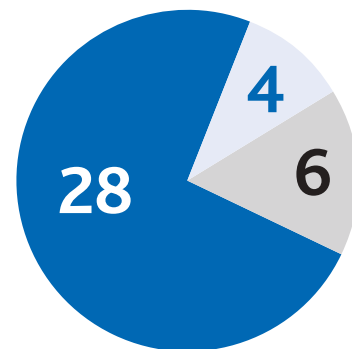
*Special care centre*

“

This workshop help me a lot because I learn how to run my own organisation. How to keep my records and financials.”

*Special care centre*

## COMPLIANCE INTERVENTIONS FOR 20 SPECIAL CARE CENTRES



● On-site visits ● Workshops ● Assessments

## RESEARCH & RESOURCE DEVELOPMENT

Resources (manuals; pamphlets and visual materials) are developed or updated in response to needs, and distributed throughout South Africa, and on occasions further afield.

During the year under review 'ALL ABOUT ME (2nd edition)' was completed. This manual has been written to guide educators, health professionals, caregivers and parents to provide life-skills and comprehensive sexuality education to children or adults with intellectual disability. This second edition brings together two previous sexuality education resources Step By Step (2005) and All About Me (2007) to provide a comprehensive manual for children and adults across different settings.

**1147**

Manuals &  
resources distributed

**Research**

Inputs for 4 research  
projects; - and 2 surveys  
2 Master's & PhD



“

“... (the) manual expands on her comprehensive first volume with an updated curriculum organised in easily accessible chapters and resource guides....directs the user to important international treaties, national legislation and policy directives which speak to the rights of supportive provisions for children, adolescents and adults with intellectual disability to fully enjoy their humanity, including safe and meaningful expression of their sexuality. The manual provides....details and practical guideline, with material carefully adapted to suit the life stages and abilities of young children, teenagers and adults, as well as accommodating to a range of learning settings in which the manual may be used.”

*Prof. Sharon Kleintjes, Vera Grover Chair of Intellectual Disability, UCT*

## COMMUNITY INVOLVEMENT AND INFORMATION

**One-to-One Day:** The annual long-awaited day, enjoyed by so many, was once again rolled out on 18th August 2019. This was the 39th year of One-to-One Day! Held for the third year running at the Cape Town Stadium, 75 service clubs, religious organisations, and schools (under the guidance of Albert Glass of B'nai B'rith) provided a day of entertainment and activities, while simultaneously raising awareness about intellectual disability.

More than 2 750 people with intellectual disability from 51 member organisations of the Forum, had an amazing day of fun and having their lives enriched.

The Forum takes on a key role administratively, both before and on the day, with the co-ordination of, amongst other things, the invitation of the guests, volunteers, and arranging the transport of participants to the event.



*Photo credits: Top left - Ilonka Gray Photography  
Top right and bottom - Chris de Beer-Procter*

“

Our learners and staff had an amazing time. The event is always one of the most anticipated events to which our learners look forward to every year. The joy and smiles that we see from them really warms our hearts. Thank you for making the day full of fun for us.”

“

...this year One-to-One event was nothing less than incredible! So many positive changes were noted that really had a huge impact on our residents such as the goodies they received and their stunning bags”

“

WCFID, please pass on our heartfelt thanks to EVERYONE involved in the One-to-One Day. Their selfless generosity touches the lives of our learners in a profound way.”

**QUARTERLY NEWSLETTERS:** Quarterly newsletters were distributed to >300 recipients (members and other interested parties).

**TELEPHONIC AND E-MAIL ENQUIRY SERVICE:** The telephonic and e-mail enquiry service is an on-going service to families, colleagues and professionals in the sector.



## ADVOCACY

### CAMPAIGN FOR THE RIGHT TO EDUCATION FOR CHILDREN WITH SEVERE TO PROFOUND INTELLECTUAL DISABILITY

The immediate right to education is guaranteed for all children in the South African Constitution and Schools Act. Yet hundreds of thousands of learners with disabilities remain out of school (DBE Report, 2016). This includes some of the most marginalised learners, those with severe to profound intellectual disabilities.

WCFID has been campaigning for the past 24 years for the rights of these children, culminating in litigation (2007) and a judgment. (CASE NO: 18678/2007, 11 NOVEMBER 2010, WC HIGH COURT):  
First Respondent: Government of South Africa; Second Respondent: Government of the Western Cape:

- 2) The respondents are directed forthwith to take reasonable measures (including interim steps):
  - 2.1) ensuring that every child in the Western Cape who is severely and profoundly intellectually disabled has affordable access to a basic education of an adequate quality
  - 2.2) providing adequate funds to organisations which provide education...

#### WESTERN CAPE

**2011**

1 109 LEARNERS  
44 CENTRES  
(22 SUBSIDISED)

**2019**

3 428 LEARNERS  
79 CENTRES  
(67 SUBSIDISED TO VARYING DEGREES)

## IMPLEMENTATION OF THE COURT ORDER

### NATIONAL

Engagement takes on an increasing national footprint, whether in Parliament, Dept. Basic Education or outreach to centres located in the Eastern Cape.

- 3 Submissions to Portfolio Committee on Basic Education, Parliament
- 2 Meetings with Dept. Basic Education, Pretoria
- Emails and informal face-to-face discussions with DBE Director-General.



### COLLABORATION AND AWARENESS

#### Eastern Cape (EC):

- 2 Visits in response to invitations from the "Eastern Cape Cluster for Special Care Centres"; and a rural centre engaging with community and various government departments.
- Dept. Social Development (WC) & WCFID hosted EC Dept. Education, Chief Director on visits to various centres.

#### Collaboration with Social Justice Organisations:

- Learner transport - Equal Education Law Centre
- Carer provision - Section 27
- Covid-19 response - Equal Education Law Centre
- Media and awareness:**
  - Poster- historical overview for distribution.
  - Mail & Guardian 6-12 March 2020



### PROVINCIAL

WCFID continues to engage the Western Cape Government (WCG):

- Quarterly meetings
- Depts. Social Development and Health (WC) continue to contribute to the funding of SCCs
- Dept. Education engage with centres through the 6 therapeutic outreach teams across the province
- 4 Follow up meetings with WCED, following 2 meetings with the WC MEC for Education and the WCED HoD to lobby for WCED to fund centres to comply with their mandate and the court order
- WCFID completes a study on the status of transport for learners with SPID at SCCs to inform the RTE advocacy
- WCFID conducts a situational survey of funding for special care centres/24 Hr Facilities
- Survey & submission on SCC staffing, training, and accreditation for appropriate remuneration
- WCG, driven by Dept. Social Development, pilot a R14 million transport project, including 8 buses and operational costs from 2018 - 2022
  - Significant consultation with sector through the WCFID Task Team
  - Comprehensive documentation of project, would be a blue print for transport of learners with disabilities
  - Roll out of first four buses delayed due to Covid-19



# FORUM MEMBERS 2019-2020

## PRE-SCHOOL

Mindstretch Pre-School, Pinelands

## SPECIAL EDUCATION & CARE CENTRES

ASD Sean Kelly, Worcester  
Autism Connect Learning Centre, Strandfontein  
Beautiful Minds Learning Centre, Plumstead  
Bizweni Centre for Children with Disabilities, Somerset West  
Bredasdorp Outreach, Bredasdorp (Elim Home)  
Carbonado Energy Autism Centre, Athlone  
Courage to Care (Cenida), Macassar  
De Heide Children's Special Care Centre, Lansdowne  
Elundini Centre, DuNoon  
Emmanuel Day Care Centre, Atlantis  
Erika Special Education & Care Centre, Mitchells Plain  
Friends Day Centre, Maitland  
Gansbaai/Stanford Outreach, Gansbaai (Elim Home)  
Good Hope Day Care Centre, Mbekweni  
Heideveld Special Education & Care Centre, Heideveld  
Imizamo Yethu Special Education & Care Centre, Khayelitsha  
Jo Dolphin, Malmesbury  
Joy Special Educare Centre, Mitchells Plain  
Little Miracles for Persons with Disabilities, Botriver  
M&R Centre of Excellence, Milnerton  
Mooiuitsig Dagsorg, Mossel Bay  
Nomaxabiso Day Care Centre, Philippi  
Nobuntu Disabled and Community Development, Joe Slovo  
Oasis Day Centre, Delft  
Oasis Day Centre, Ravensmead  
Onikwa Special Day Care Centre, Saldanha  
Project Playground, Langa  
Roosendal Special Care Centre, Delft  
Sherwood Park Day Care Centre, Manenberg  
Sibongile Day & Night Care, Khayelitsha  
Simanyene Center for the Disabled, Nomzamo, Strand  
Sinethemba Special Care Centre, Masiphumelele  
Siyabonga Huis van Danksegging, West Coast  
Small Dreams Special Needs Educational Daycare Centre, Riversdale  
Sobambisani/Sinethemba Day Care, New Crossroads  
Sterretjies Gestremde Gemeenskap Sorg, Citrusdal  
Sunrise Special Care Centre, Heathfield  
The Butterfly Centre, Stanford  
Trippeltoontjies Playschool for Disabled Children, Robertson  
Understand Hope & Care, Khayelitsha  
Vrolike Vinkies, Vredendal  
Vukuhambe Day Care, Zwelethemba  
Vukani, Khayelitsha  
Yarden Children's Enrichment Centre, Durbanville  
Yomelelani, Philippi  
Woodside Special Care Centre, Rondebosch

## SCHOOLS

Alpha School for Learners with Autism, Woodstock  
Alta du Toit School, Kuils River  
Athlone School for the Blind, Athlone  
Bel Porto School, Lansdowne  
Bloulei School & Resource Centre, Retreat  
Camphill School, Hermanus  
Chere Botha School, Bellville  
Dorothea School, Stellenbosch  
Eden LSEN School, Worcester  
Enkuthazweni Skills Centre, Port Alfred  
Glenbridge School & Resource Centre, Bergvliet  
Home of Hope, Table View  
Ligstraal School for LSEN, Paarl  
Molenbeek School, Maitland  
Nompumelelo School, Gugulethu  
Oasis Special School, Belhar  
Olympia School, George  
Perpetua House, Monte Vista  
Seal College, Table View  
Vera School for Autistic Learners, Crawford  
Vista Nova, Rondebosch  
Wilge Special Care Centre, Atlantis

## SUPPORTED EMPLOYMENT

Aanhouwen Work & Care Centre, Somerset West  
Alta du Toit Nasorg, Bellville  
Care Career Connection, Elsenburg  
Emmaus, George  
Huis Horison, Stellenbosch  
Oasis Protective Workshop, Claremont  
Oasis Protective Workshop, Ravensmead  
The Living Link, Ndabeni  
Training Workshops Unlimited (TWU), Athlone  
TWU, Mitchells Plain  
TWU, Nonceba, Khayelitsha  
TWU, Retreat

## RESIDENTIAL SPECIAL CARE/24 HOUR FACILITIES

Agape Family Ministries, Grabouw  
ASD Sean Kelly, Worcester  
Bambo Children's Home, Philippi East  
Die Eiland Huis, St Helena Bay  
Elim Home, Elim  
Gabriella Centre, Somerset West  
Home of Hope, Tableview  
HeartMiracles Baby Sanctuary, Somerset West  
Iqhayiya Care & Support House, Khayelitsha  
Little Angels Children's Home, Somerset West  
Masincedane Centre, Nyanga  
Sibongile Day & Night Care, Khayelitsha  
Simanyene Residential, Nomzamo, Strand  
Sivuyile, Stikland  
Understand Hope & Care, Khayelitsha

## RESIDENTIAL/GROUP HOMES 20

Adams Farm Home Trust, Plumstead  
Alta Du Toit Nasorg, Bellville  
Belmont Care Centre, Kenilworth  
Camphill Farm Community, Hermanus  
Camphill Village West Coast, West Coast  
Community Mental Health, Bellville  
Garden Cottage, Heideveld  
Elizabeth Roos Home for Women, Cape Town  
Glendale Home, Heathfield  
Huis Horison, Stellenbosch  
Humberstone House, Plumstead  
Hurdy Gurdy House, Penhill Estate  
Includid Group Homes, Maitland  
Oasis House, Claremont  
Oasis House (Chukker-Lee), Kenwyn  
Oasis House, Ruyterwacht  
St. Joseph's Home, Montana  
Sunfield Home, Wellington  
The Academy for Adults with Autism, Bergvliet  
The Open Circle, Maitland

## HOSPITALS

Alexandra Psychiatric Hospital, Maitland  
Lentegeur Psychiatric Hospital, Mitchells Plain  
Nelspoort Hospital, Beaufort West

## ASSOCIATIONS AND ORGANISATIONS

Autism Western Cape, Mowbray  
Breede Valley A.P.D., Worcester  
Cape Mental Health, Observatory  
Care Career Connection, Elsenburg  
Child Welfare Wellington, Wellington  
Community Mental Health & Psychiatry Foundation, Bellville  
CSPID Team Central, Athlone  
CSPID Team Rural, Riebeeck West  
CSPID North, Bellville  
CSPID South, Athlone  
Down Syndrome Association Western Cape, Bellville  
Down Syndrome Support, Rondebosch  
Down with Dough, Aurora  
Fish Hoek, Kommetjie, Noordhoek Welfare Association, Masiphumelele  
Inclusive Education South Africa, Wynberg

## ASSOCIATIONS AND ORGANISATIONS (continued)

Iris House Children's Hospice, Stikland  
Jewish Community Services, Vredehoek  
Mossel Bay A.P.D., Mossel Bay  
National Institute for the Deaf (NID), Worcester  
Oasis Association, Claremont  
Orion Organisation, Atlantis  
Oudtshoorn A.P.D., Oudtshoorn  
Senecio Support, Somerset West  
The Living Link, Pinelands  
Tygerberg Hospital, Social Work Dept, Tygerberg  
Western Cape Association for Persons with Disabilities (A.P.D.), Milnerton  
Western Cape Cerebral Palsy Association, Rondebosch  
West Coast Disability Forum, Vredenburg

## INDIVIDUALS

Toni Abrahams  
Wendy Arendse  
Elsabet Bester  
Janice Behr  
Catherine Blow  
Isabelle Bouic  
Tamsin Bush  
Judy Cooke  
T Fouché  
Silen Fourie  
Nicole Goldberg  
Bonita Gordon  
Jacqui Harvey  
Dorothea Hendricks  
Dr Linda Hering  
Rebecca Johns  
Dr Callista Kahonde  
Noreth Kluit  
Marianne Killien  
Prof. Sharon Kleintjes  
Rojeanne Koen  
Amber Land  
Nicholas Latzel  
Sutezza Layman  
Prof. Judith Mckenzie  
Pauletta Medell  
Sibongile Mgandela  
Naser Cader Moko  
Ann Myles  
Yolande Offord  
Charlie-Ann Punt  
Jessica Rood  
Farzanza Sanga  
Dr Fiona Schulte  
Shareldine Swartz  
Caroline Taylor  
Toni Tickton  
M van Niekerk  
Tanya van Rooyen  
Inge Visagie  
Fundiswa Vavi  
Nadia von Biljon

## NATIONAL

Eastern Cape Cluster of Special Care Centres, Mdantsane  
Enkuthazweni Skills Centre, Port Alfred

## HONORARY MEMBERS

Prof. Colleen Adnams  
Prof. Chris Molteno  
Ruth Alfreds  
Rosemary de Waal  
Albert Glass  
Vivienne van der Merwe  
William Kerfoot





WCFID, ASAT House, Alexandra Hospital, Annex Road, Maitland, 7405

P. O. Box 142, Maitland, 7404

Telephone: 021 510 4686 Fax: 021 510 4687 E-mail: [info@wcfid.co.za](mailto:info@wcfid.co.za)

Reg. no: 000-888 NPO PBO 18/11/13/2392 VAT No: 4100211772

[www.wcfid.co.za](http://www.wcfid.co.za)