

the vera grover chair of intellectual disability (UCT) in the spotlight:

Prof. Colleen Adnams was presented with the WCFID Honorary Life Membership Award by the Chairperson, Fatima Shaboodien, at the WCFID 2017 AGM. The award is in recognition of her exceptional service to the intellectual disability sector, and has numerous publications in the areas of foetal alcohol spectrum disorders and intellectual disabilities. Appointed from 2007 - 2017, Colleen has served on the WCFID Board since 2007. She is currently the President-Elect and Vice President, Africa Region, International Association of the Scientific Study of Intellectual and Developmental Disability (IASSIDD).



Chairperson, Fatima Shaboodien, awards Prof. Colleen Adnams, a WCFID Honorary Life Membership Award.



The three incumbents of the Vera Grover Chair of Intellectual Disability, from right: Chris Motteno (1995 - 2005); Colleen Adnams (2007-2017) and Sharon Kleintjes (2018 -).



Prof. Sharon Kleintjes, the new incumbent of the Vera Grover Chair of Intellectual Disability.

The WCFID is delighted to announce that Prof. Sharon Kleintjes has been appointed as the third incumbent of the Vera Grover Chair of Intellectual Disability, University of Cape Town. As a clinical psychologist, she comes with a strong clinical, research and academic background. Prof. Kleintjes has a long history in the mental health sector, and gained experience from Prof. Vera Grover.

chairperson's report: 2017/2018

Amidst all the protests, marches and discontent aimed at poor service delivery of basic services and ongoing struggles to build a more equitable society, the Western Cape Forum prides itself in meeting the following: good governance standards and delivering skills-training, broadening knowledge bases, developing capacities and advancing the rights of people with intellectual disabilities and those who work with them.

These roles have enhanced the Forum's understanding and overview of the disability sector, provided a good perspective of what developments have taken place and what are challenges and the serious gaps that continue to challenge the mental health sector. Additionally, the Esidimeni tragedy once again highlighted the urgent need for ongoing monitoring and attention which has plagued the sector for a long time. Network organisations like the WCFID continue to play a crucial role in empowering staff through up-skilling and training, like carer courses, so that appropriate services are delivered in a proper and dignified manner. Research and resource development gives us the opportunity to translate theory into practice.

Our theme for the 2017 Regional Biennial Intellectual Disability Meeting "Lifelong Learning", depicts the commitment and passion that the drives the Forum to engage with member organisations, civil society, funders and government departments in a civil manner with respect and dignity. Much time, engagement and planning has been injected into ensuring that the implementation of government departments' planning aligns itself with the court ruling.

The WCFID continues to be open and flexible, an organisation that listens and responds, certainly a network of member organisations that builds others. I reiterate that all our contributions would not have been possible without our member organisations and other role players that continue to be committed to making a noticeable difference in the lives of people with intellectual disability.

Fatima Shaboodien
Chairperson - WCFID

WCFID staff: Tessa Wood, Director; Aimee Isaacs, Programme Manager; Desiree Douglas, Training Coordinator; Maurisa Moloto, Community Trainer & Resource Developer; Michelle Merf, Governance and Financial Management Trainer; Vanessa Japtha, Advocacy Officer; Rebecca Johns, Life Skills Trainer & Resource Developer; Felicity Dreyer, Administrator; Sandy Butler, Project & HR Administrator; Nosipho Peter, General Assistant.

donor recognition - financial aid & in kind/services:

Anne Kreitzer Will Trust
Consol Glass (Pty) Ltd
Co-Workers of Mother Teresa
Claremont Rotaract
Dept. of Health, Western Cape
+ 4,000 Volunteers at One-to-One Day, including the service providers (community clubs, schools, religious bodies)

Dept. of Social Development, Western Cape
Frank Robb Charitable Trust
InVision Services, USA
JET Lee Will Trust
Legal Resources Centre, Cape Town

National Lotteries Commission
Syringa Trust
The Raith Foundation
Waterfront Rotary



The Grover Scholarship and Sponsorship Trust: The Grover Trust Fund Allocations Committee awarded sponsorships to the facilities of 13 individuals with intellectual disability; as well as 5 scholarship awards, including the following degrees: 3 PhDs; 1 Master's; and 1 Honours, all specific to intellectual disability.

AUDITED FINANCIAL STATEMENTS FOR 2017/18 ARE AVAILABLE ON REQUEST.

the forum wishes to thank...

the following members of the board of management (2016 - 2018) for their service:

Fatima Shaboodien, Principal, De Heide Children's Special Centre, Lansdowne (Chairperson)
John Williams, Businessman (Treasurer)
Emeritus Prof. Colleen Adnams, Professor of Intellectual Disability, Dept. Psychiatry and Mental Health, UCT
Kay Cikizwa, Social Worker, Alexandra Hospital, Maitland
Lesinda Cunningham, Director, Elm Home, Overberg
Gail Davids, Services Manager, Oasis Association, Claremont
Rosemary De Waal, Social Worker
Prof. Sharon Kleintjes, Vera Grover Professor of Intellectual Disability, Dept. Psychiatry and Mental Health, UCT; and WCG DoH
Lindelwa Madikane, Principal, Vukani Special Care Centre, Khayelitsha
Aletta Pearce, Retired Deputy Chief Education Specialist for Special Schools, WCED
Sue van der Linde, Director, Iris House, Stikland
Nomasango Xabanisa, Principal, Sibongile Day & Night Care, Khayelitsha
Tessa Wood, Director, WCFID (*ex officio*)

2017/18 forum members

EARLY LEARNING CENTRE

Edu-Play, Durbanville

SPECIAL EDUCATION & CARE CENTRES

Agape Family Ministries, Grabouw
ASD Sean Kelly, Worcester
Autism Connect Learning Centre, Strandfontein
Balula Home Based Care & Craft Centre, Fisantekraal
Bizweni Centre for Children with Disabilities, Somerset West
Bredasdorp Outreach, Bredasdorp (Elm Home)
Cenida, Macassar
De Heide Children's Special Care Centre, Lansdowne
Elundini Centre, DuNoon
Emmanuel Day Care Centre, Atlantis
Erika Special Education and Care Centre, Mitchells Plain
Friends Day Centre, Maitland
Gabriella Residential & Day Care Centre, Somerset West
Gansbaai/Stanford Outreach, Gansbaai (Elm Home)
Good Hope Day Care Centre, Mbekeeni
Heideveld Special Education and Care Centre, Heideveld
Imizamo Yethu Special Education and Care Centre, Khayelitsha
Jo Dolphin, Malmesbury
Joy Special Educare Centre, Mitchells Plain
Little Miracles for Persons with Disabilities, Botriver
Lonwabo Day Care, Mfuleni
Masikole Special Day Care Centre, Beaufort West
Nomaxabiso Day Care Centre, Philippi
Nobuntu Disabled and Community Development, Atlantis
Oasis Day Centre, Delft
Oasis Day Centre, Ravensmead
Onikwa Special Day Care Centre, Saldanha
Sterretjies Gestremde Gemeenskap Sorg, Citrusdal
Paarl Stimulation Centre, Paarl
Play on Wheels, Langa
Reenboog Dagsorg Sentrum, Vredendal
Roosendal Special Care Centre, Delft
Sherwood Park Day Care Centre, Manenberg
Sibongile Day and Night Care, Khayelitsha
Simanyene Center for the Disabled, Nomzamo, Strand
Sinethemba Special Care Centre, Masiphumelele
Syanithanda, Mosselbay
Sobambisani/Sinethemba Day Care, New Crossroads
Sunrise Special Care Centre, Eftindale
The Special Kids Day Care Centre, Vredenburg
Trippeltoontjies Playschool for Disabled Children, Robertson
Umkhumbé Noah's Ark Autism Centre, Philippi
Umthi Special Care Centre, Stikland
Unakho Day Care Centre, Khayamandi
Understand Hope and Care, Khayelitsha
Yukuhamba Day Care, Zwelethemba
Yukani, Khayelitsha

RESIDENTIAL SPECIAL CARE/24 HOUR FACILITIES

Agape Family Ministries, Grabouw
ASD Sean Kelly, Worcester
Bambo Children's Home, Philippi East
Die Eliand Huis, St Helena Bay
Elm Home, Elm
Gabriella Residential & Day Care Centre, Somerset West
Home of Hope, Table View
Heartlands Baby Sanctuary, Somerset West
Iqhayiya Care & Support Home, Khayelitsha
Little Angels Children's Home, Somerset West
Masincedane Centre, Nyanga
Sibongile Day & Night Care, Khayelitsha
Sivenathi, Blackheath
Sivuyile, Stikland
Understand Hope & Care, Khayelitsha

RESIDENTIAL/GROUP HOMES

Adams Farm Home Trust, Plumstead
Alta Du Toit Nasorg, Bellville
Anchors Away Village, Glencairn
Camphill Farm Community, Hermanus
Camphill Village West Coast, West Coast
Community Mental Health, Bellville
Garden Cottage, Heideveld
Elizabeth Roos Home for Women, Cape Town
Glendale Home, Heathfield
Huis Horison, Stellenbosch

SCHOOLS

Alpha School for Learners with Autism, Woodstock
Alta du Toit School, Kuls River
Athlone School for the Blind, Athlone
Beacon LSEN School, Mitchells Plain
Bel Porto School, Lansdowne
Bel-EI School for Epileptics, Kulsriver

SCHOOLS (continued)

Blouvel School & Resource Centre, Retreat
Campbell School, Hermanus
Chere Botha School, Bellville
Deutsche Internationale Schule, Cape Town
Dorothea School, Stellenbosch
Eden LSEN School, Worcester
Glenbridge School & Resource Centre, Diep River
Home of Hope, Tableview
Karitas School, Vredenburg
Lentegeur LSEN School, Mitchells Plain
Ligstraal Skool, Paarl-Oos
Mispah School for LSEN, Elm
Molenbeek School, Maitland
Nompumelelo School, Gugulethu
Nuwe Hoop Sentrum, Worcester
Oakley House School, Diep River
Ocean View School, Ocean View
Perpetua House, Monte Vista
Seal College, Milnerton
Vera School for Autistic Children, Rondebosch East
Weskus School for Skills, Saldanha
Yeshua Christian Primary School, Heathfield

SUPPORTED EMPLOYMENT

The Academy for Adults with Autism, Bergvliet
Alta du Toit Nasorg, Bellville
Astra Centre, Gardens
Care Career Connection, Elsenburg
High Spirits Training Centre, Strandfontein
Huis Horison, Stellenbosch
Nceduluntu Skills Development Training, Nomzamo
NID Adult Care (Lewensruimte), Worcester
Oasis Protective Workshop, Claremont
Oasis Protective Workshop, Ravensmead
Sunfield Home, Wellington
The Living Link, Ndabeni
Training Workshops Unlimited (TWU), Athlone
TWU, Mitchells Plain
TWU, Nonceba, Khayelitsha
TWU, Retreat
The Village Work Centre, Claremont
Work4You, Salt River

RESIDENTIAL SPECIAL CARE/24 HOUR FACILITIES

Agape Family Ministries, Grabouw
ASD Sean Kelly, Worcester
Bambo Children's Home, Philippi East
Die Eliand Huis, St Helena Bay
Elm Home, Elm
Gabriella Residential & Day Care Centre, Somerset West
Home of Hope, Table View
Heartlands Baby Sanctuary, Somerset West
Iqhayiya Care & Support Home, Khayelitsha
Little Angels Children's Home, Somerset West
Masincedane Centre, Nyanga
Sibongile Day & Night Care, Khayelitsha
Sivenathi, Blackheath
Sivuyile, Stikland
Understand Hope & Care, Khayelitsha

RESIDENTIAL/GROUP HOMES

Adams Farm Home Trust, Plumstead
Alta Du Toit Nasorg, Bellville
Anchors Away Village, Glencairn
Camphill Farm Community, Hermanus
Camphill Village West Coast, West Coast
Community Mental Health, Bellville
Garden Cottage, Heideveld
Elizabeth Roos Home for Women, Cape Town
Glendale Home, Heathfield
Huis Horison, Stellenbosch

RESIDENTIAL/GROUP HOMES (continued)

Humberstone House, Plumstead
Hurdy Gurdy House, Penhill Estate
Includid Group Homes, Maitland
NID Adult Care Lewensruimte, Worcester
Oasis House, Claremont
Oasis House (Chukker-Lee), Kenwyn
Oasis House, Ruyterwacht
Sunfield Home, Wellington
The Academy for Adults with Autism, Bergvliet
The Open Circle, Maitland
The Vine Community, Constantia
Zandvliet Care Facility, Macassar

HOSPITALS

Alexandra Psychiatric Hospital, Maitland
Lentegeur Psychiatric Hospital, Mitchells Plain
Nelspoort Hospital, Beaufort West

ASSOCIATIONS AND ORGANISATIONS

Autism Western Cape, Mowbray
Beaufort West A.P.D., Beaufort West
Breede Valley A.P.D., Worcester
Cape Mental Health, Observatory
Care Career Connection, Elsenburg
Community Action Partnership, Swellendam
Community Mental Health & Psychiatry, Bellville
CSPID Team North, Bellville
CSPID Team South, Mitchells Plain
CSPID Team Rural, Riebeeck West
Disability Action Research Team, KwaZulu Natal
Down Syndrome Association
Western Cape, Bellville
Down Syndrome Support, Rondebosch
Fish Hoek, Kommetjie & Noordhoek
Welfare Association, Ocean View
Inclusive Education South Africa, Wynberg
Iris House Children's Hospice, Stikland
Jewish Community Services, Vredhoeke
National Institute for the Deaf, Worcester
Oasis Association, Claremont
Ollantsoosrivier Vereniging, Vredendal
Orion Organisation, Atlantis
Senecio Support, Somerset West
Special Care Agency, Stellenbosch
The Michael John Connor Institute, Table View
Uhambo Foundation, Wynberg
Western Cape Cerebral Palsy Association, Rondebosch
Western Cape A.P.D., Milnerton
West Coast Disability Forum, Vredenburg
Western Cape Network on Disability, Salt River
Witzenberg Association for Person with Disabilities, Ceres

INDIVIDUALS

Maryam Abbas; Abdul-Razaq Ajam; Joan Apollis; Janice Behr; Catherine Blow; Aletta-Marie Burger; Adri Cloete; Santie Coetzee; Chanel Daniels; Mariam Davids; Laura De Wet; Nicole Dennis; Beverley Dickman; Nicole Goldberg; Marilyn Gordon; Nick Groll; Sharon Gunston; Dr Linda Hering; Anne Japtha; Dr Callista Kahonde; Marianne Killen; Prof. Sharon Kleintjes; Tammy Kleynhans; Rojeanne Koen; Elnette Kotze; Amber Land; Nicholas Latzel; Sutezza Layman; Antje Manfroni; Emily Marshall; Prof. Judith Mckenzie; Pauletta Medell; Maye Mhaka; Ann Myles; Yolande Offord; Felroza Parker; Aletta Pearce; Marinda Roelofse; Farzanza Sanga; Dr Fiona Scheder; Dr Fiona Schulte; Justine Shaskovsky; Debra Sowter; Eldoret Sykes; Toni Tickton; Maurisa van Niekerk; Nicola Ward; Elvin Williams; John Williams; Marion Williams.

HONORARY MEMBERS

Prof. Colleen Adnams; Prof. Chris Motteno; Ruth Alfreds; Rosemary de Waal; Albert Glass; Vivienne van der Merwe; William Kerfoot.

www.wcfid.co.za
Reg. No: 000-888 NPO PBO 18/11/13/2392

community awareness

training & support

research & resource

ADDING SKILLS • ADDING KNOWLEDGE • ADVANCING RIGHTS
supporting service providers in the intellectual disability sector

2017/18 annual report



T: 021 510 4686 F: 021 510 4687 E: info@wcfid.co.za

WCFID, Asat House, Alexandra Hospital, Annex Road, Maitland, 7405
P. O. Box 142, Maitland, 7404

WCFID SUBSCRIBES TO THE INDEPENDENT CODE OF GOVERNANCE FOR NPOS

VISION: A SOUTH AFRICA WHERE ALL PEOPLE WITH INTELLECTUAL DISABILITY ARE ENABLED TO LIVE WITH INHERENT DIGNITY AS CONFIRMED IN THE CONSTITUTION

organisational impact: statistics & stories

membership impact: perspectives

A LONG STANDING INDIVIDUAL/PARENT MEMBER:

Dear WCFID Staff,
I would like to compliment the team on an excellent and interesting training programme which you have scheduled... As my son is 40 and I am retired, and getting more senior, I remain interested, though no longer active, in intellectual disability (ID) affairs and nor do I attend many courses. I read all emails, newsletters etc. with interest sent by WCFID. Well done to everyone and know that I and many others appreciate all you do for us as parents, educators, carers, therapists and persons with ID (January 2018).

MEMBER ORGANISATIONS:

- I feel confident in WCFID as a support and I am up skilled when needed - Maitland
- It has made a huge difference because whatever knowledge picked up is put into practice in the centre - Heideveld
- They always send us updates about workshops and what's happening. Keep up the good work - Atlantis
- A lot has changed in our organisation and we are very grateful to the WCFID for all the information and resources we got from them. - Site C, Khayelitsha.

lifelong learning: biennial intellectual disability conference



A day of learning and networking at Lentegeur Hospital, Mitchell's Plain, was opened by the percussion band of Lentegeur Special School. The programme was chaired by Prof. Colleen Adhams, Vera Grover Chair of Intellectual Disability, UCT & Western Cape Government Dept. Health.

Topics included: Early intervention in autism spectrum disorder and related disorders; Prenatal substance abuse; Classroom management; Sexuality of young adults; Habilitation and work placement for people with dual diagnosis; and The Impact of the WCFID/Dept. Social Development compliance and financial management programme.

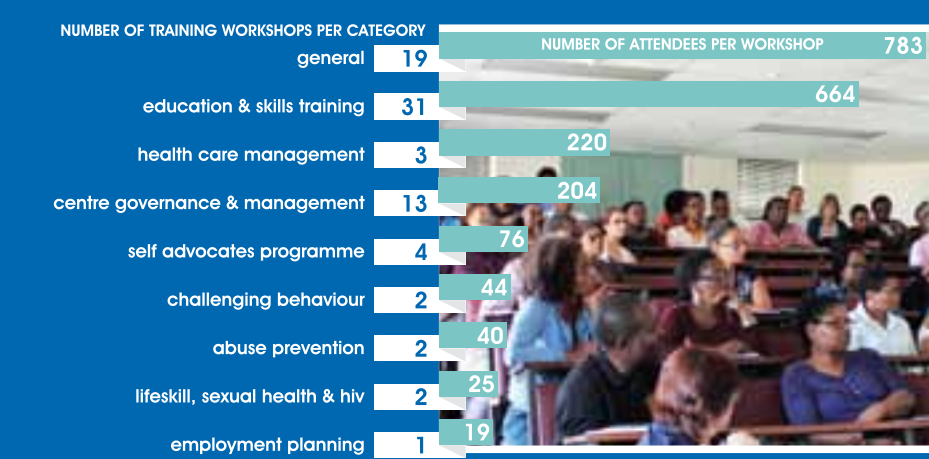
training & support:

OVERVIEW:

- A core function is the capacity building of staff at member organisations.
- Training is presented through workshops, (2 hours to 3 days).
- 2017/18 saw 77 workshops reaching 2075 attendees, and 104 onsite mentoring sessions at 21 centres.
- HPCSA, SACSSP CPD points; & SACE Continuing Professional Teacher Development Certificates are issued at various workshops.
- A key component has been developing and facilitating unique training programmes in response to needs.

TRAINING PROGRAMMES:

2075 ATTENDEES AT 77 WORKSHOPS



+104

onsite
'Governance & Management'
workshops, reaching
21 centres in areas such as
Saldanha, De Doorns,
Joe Slovo, Khayelitsha,
St Helena Bay
and Zwelethemba.



home based care: disability care
accredited course for staff of special care centres/24 hour facilities



In response to the High Court Ruling, Case no: 18678/2007: the absence of an accredited carer course for staff of special care centres and 24 hour facilities; and the need to professionalise the special care sector, the WCFID considered various options. This led to a partnership with Robin Trust FET College, and the development and roll out of a 6 month HWSETA SAQA NQF Level 2 accredited Home Based Care: Disability Care, course.

The pilot accredited course reached 19 carers from 9 centres from as far as Nomzamo, Atlantis and Masiphumele.

A totally unexpected spinoff - feedback from a husband attending the graduation:

“Thank you for what you’ve done for my wife and all the other students. I had sleepless nights, she was up so late, working hard on assignments and studying. But she made it and I’m so proud, we all are.

Our children are working harder at school now too and this is just the beginning. We now know we can do anything we work towards. It is such motivation for our family.”



An outcome of the course was to learn how to communicate with clients, and this included culturally appropriate interactions. Learners used this opportunity to share their own cultures and traditions and share the joys and concerns in the current South African context.



Resources funded by the members of a Rotaract Club.



9 November 2017: A proud occasion. 19 carers graduated at a ceremony receiving National Certificate: Community Health Worker Level 2, 35 credits towards a South African Qualifications Association (SAQA) accredited course in Home Based Care: Disability Care.

research & resource development:

Responding to identified needs, research is conducted leading to the development and production of relevant and culturally appropriate, subsidised training material. During the period under review, three new resources were developed:



Guidelines for Starting and Running a Special Care Centre/24 Hour Facility for the NPO Sector. The manual includes basic information on intellectual disability, and critical considerations such as registration with the NPO directorate; licensing; obtaining property; human resources; selection of learners; compliance; financial management; policies; good governance; and programmes.



Learning to use the toilet: A visual cue resource for toilet training the child with intellectual disability. In line with international trends, it is increasingly recognised that toilet training needs to take place in the child's home and place of learning. Increased dignity and independence is a direct spin off of being toilet trained.



Learning to Think: A structured 12-step programme which will help the child with intellectual disability to recognise and understand objects and their use in their daily environments. Initially written more than 30 years ago by Prof. Vera Grover, this manual has been updated to be more accessible throughout the sector.

advocacy:

CAMPAIGN FOR THE RIGHT TO EDUCATION FOR CHILDREN WITH SEVERE TO PROFOUND INTELLECTUAL DISABILITY

The Constitution of South Africa and Schools Act (SASA) guarantee the immediate right to education for all children. Yet, South Africa has +600,000 out-of-school children with disabilities (DBE Report, 2016). Learners with severe to profound intellectual disabilities are the most marginalised, and refused admission to state schools, a violation of their constitutional rights. WCFID has been campaigning for the past 22 years for their right to education, culminating in litigation in 2007.

JUDGMENT (CASE NO: 18678/2007, 11 NOVEMBER 2010, WC HIGH COURT):

First Respondent: Government of South Africa; Second Respondent: Government of the Western Cape:

The respondents are directed forthwith to take reasonable measures (including interim steps):

- ensuring that every child in the Western Cape who is severely and profoundly intellectually disabled has affordable access to a basic education of an adequate quality
- providing adequate funds to organizations which provide education...

implementation of the court order:

western cape:

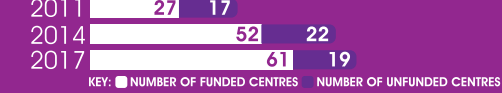
2011: R34m » 2014: R60m » 2017: R80.2 million spend

Strategic and operational forums/task teams established in which the WCFID has participated.

OUTCOMES:

- WC Education Department: 4 outreach teams support 54 special care centres in seven districts.
- 76 learners from centres placed in special schools.
- Increased subsidization of children and centres.

FUNDING OF SPECIAL CARE CENTRES/NPO'S:



SUBSIDIZATION OF CHILDREN AT SPECIAL CARE CENTRES/NPO'S:



national:

Implementation of Treasury's conditional grant of R477 million by Dept. Basic Education (DBE, Oct. 2016) for the education of learners with severe to profound ID:

DBE appointed 31 outreach teams to support education for learners with severe to profound intellectual disability at special care centres.

WCFID ACTIVITIES:

- WCFID made submissions on:
 - Draft Policy on the Provision of Quality Education and Support for Children with Severe to Profound Intellectual Disability (DBE, Nov 2016).
 - Draft Learning Programme for Children with Severe to Profound Intellectual Disability (DBE, November 2016).
 - Guidelines for the licensing of residential and day care facilities for people with mental and/or intellectual disabilities (DoH, July 2017).
- Participated in training of DBE provincial staff on the education of learners with severe to profound intellectual disability.
- Accelerated its advocacy with national government by engaging parliament to hold DBE accountable. WCFID made written submissions to:
 - Portfolio Committee on Basic Education on the distribution of the conditional grant, which does not meet the prescriptions of the court order.
 - Standing Committee on Appropriations (SCoA) about access to scholar transport and lack of implementation of the court order.

community awareness & information programme:



• **ONE-TO-ONE DAY:** 20th August 2017 was the 38th year the WCFID helped arrange for members to attend this funfair day. The year included the exciting development of holding the event at the Cape Town Stadium, built for the 2010 Soccer World Cup. Once again, the day did not disappoint, 47 member organisations participated, involving almost 2,700 people with intellectual disability. More than 70 service clubs, religious organisations, and schools under the guidance of Albert Glass, of B'nai B'rith, provided a day of entertainment and activities, while simultaneously raising awareness about intellectual disability. **IMPACT:** The day is much MORE than a fun day for the people with intellectual disability. Below is feedback from two different perspectives:

A ONE-TO-ONE DAY STALL VOLUNTEER: On the odd occasion when I took a break and looked around, I was astounded to see the number of children with disabilities that fill our world and the varying degrees of their disabilities. Their minds are very special and dedicated persons for whom I have great respect. I was emotionally dumb struck by what I was seeing and experiencing, tears welled up in my eyes as I let the experience fill my soul. Twenty ice cream tubs, 1000 ice cream cones and as many ice creams, and we were finished with our morning shift. A tear or two of mine fell on the odd ice cream for which I apologise. It takes experiences like this to bring the reality of life home to those of us, that there are many others very less fortunate than ourselves in this world. Thanks for the opportunity to serve.

A PARTICIPANT'S VOLUNTEER: I have attended One-to-One for the past three years and not only have I thoroughly enjoyed it every time, but the experience seems to be getting better and better. On 20 August, I was privileged to be paired up with a lovely woman...., and she is one of the most jovial and happy people that I have ever met. Throughout the day there was a lot of hugging and dancing and... made this experience truly unforgettable. What I have observed from this day is that a lot of people that have a disability do not necessarily have as much access to fun and interactive events as people who do not have a disability. This makes events such as One-to-One all the more worth it and necessary. This event was an eye opener in different aspects and an overall amazing experience. I am incredibly grateful to the organisers of One-to-One, the managers of my fellow interactors, my teachers, Rotarians and... for making this day possible and enjoyable. I really hope to continue participating and contributing in the years to come.

• **QUARTERLY NEWSLETTERS WERE CIRCULATED TO MORE THAN 345 RECIPIENTS (MEMBERS AND OTHER INTERESTED PARTIES).**

• **TELEPHONIC AND E-MAIL ENQUIRY SERVICE IS AN ONGOING SERVICE TO FAMILIES, PROFESSIONALS AND COLLEAGUES IN THE SECTOR.**